

The most Commonly Made Technical Mistakes in Cultivating of Winter Rye

Radosław Musolf

Hanse Agro GmbH Gettorf

(www.hanse-agro.de)

Forecrops

Rye is often grown after cereals or in a monoculture, as well as after forecrops such as maize or potatoes that are leaving the field late.

Soil cultivation

Cultivation for rye usually involves a rough, shallow ploughing.

Soil pH

Lack of awareness of the need to regulate soil pH for rye and low pH results.

First of all, find an appropriate site...

(Photo by W. Szczepaniak)



First of all, find an appropriate site...

(Photo by W. Szczepaniak)



Basic fertilisation

Lack of balanced fertilisation (especially on poor sites and after weak forecrops), errors in the methods and timing of fertiliser application.

Seed material and varieties

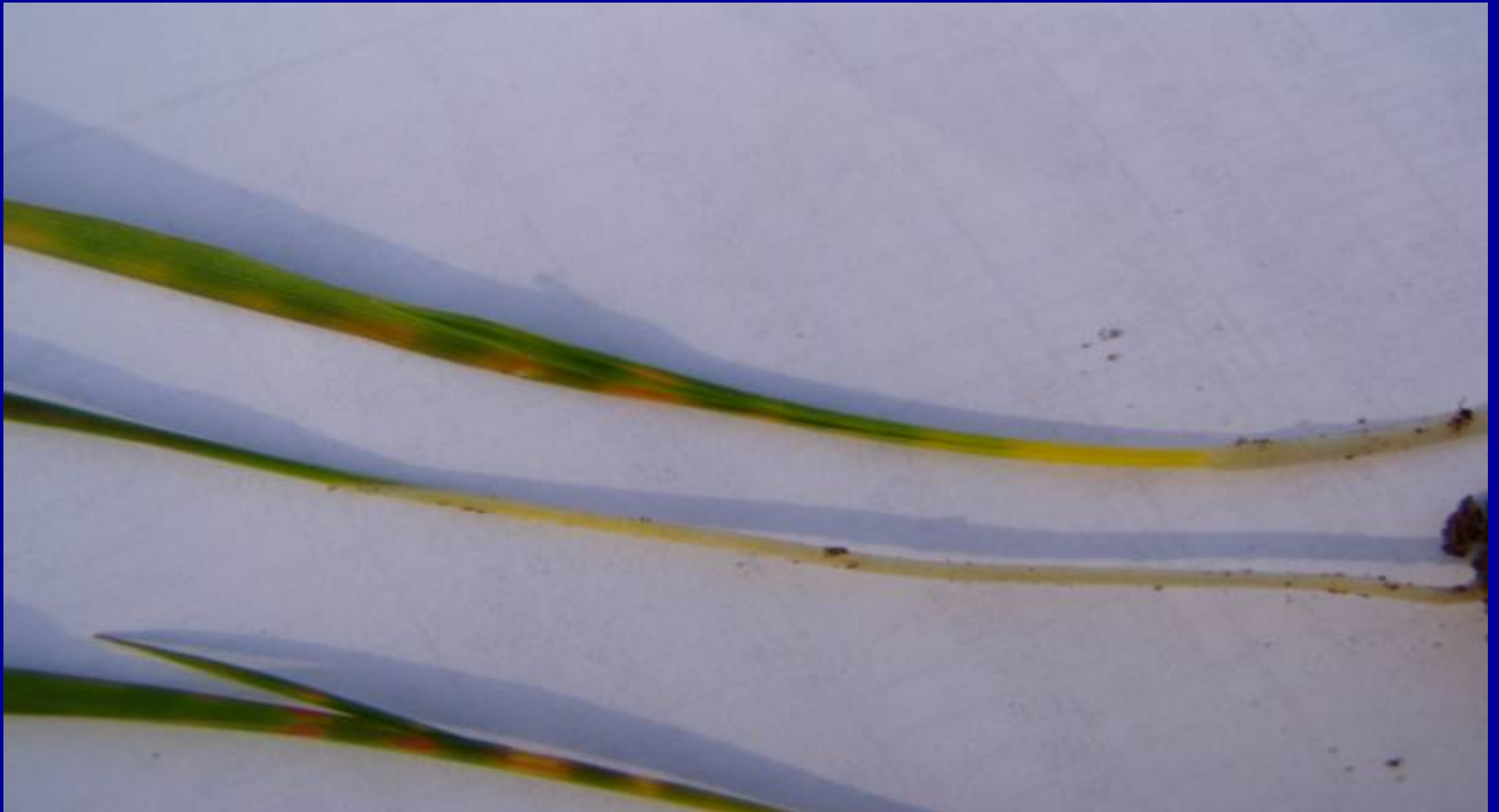
Problems with seed quality (replacement frequency, problem with paralysis by fuzarium), lack of proper treatment.

Date and amount of seeding

Previous mistakes are exacerbated by late sowing, in too-deep, pressed soil which does not allow development of the yield's full potential.

Together with errors in cultivation compensated for by a too-high sowing rate, results include a quantity of straw instead of grain.

Sowing depth



Sowing depth



Rye protection in autumn

Usually underrated – nothing is being done, the minimum includes herbicide treatment and protection of plants against the risk of snow mold.

Weed control, especially in earlier sown canopies, should be not be done at the last minute, as this is generally more expensive *(Photo by P. Sikora)...*



Nitrogen fertilisation

Wrong division, doses often too-late and inadequate for the plants' growth rate and nutritional requirements.

Micronutrients

Underestimated issue, especially on poor sites.

Manganese deficiency in a canopy of winter barley



Spring fungicides - protection and growth regulators

Wrong choice of fungicides and regulators,
doses and application timing.

Often too late and in too-large quantities.

Harvesting

Rye during the harvest is treated with neglect, often at the end of the harvest, which could mean a reduction in the yield and quality of the grain.

Sales policy

Unused capabilities of rye price stabilisation. There have been large fluctuations in raw material prices in recent years, resulting in high crop profitability.